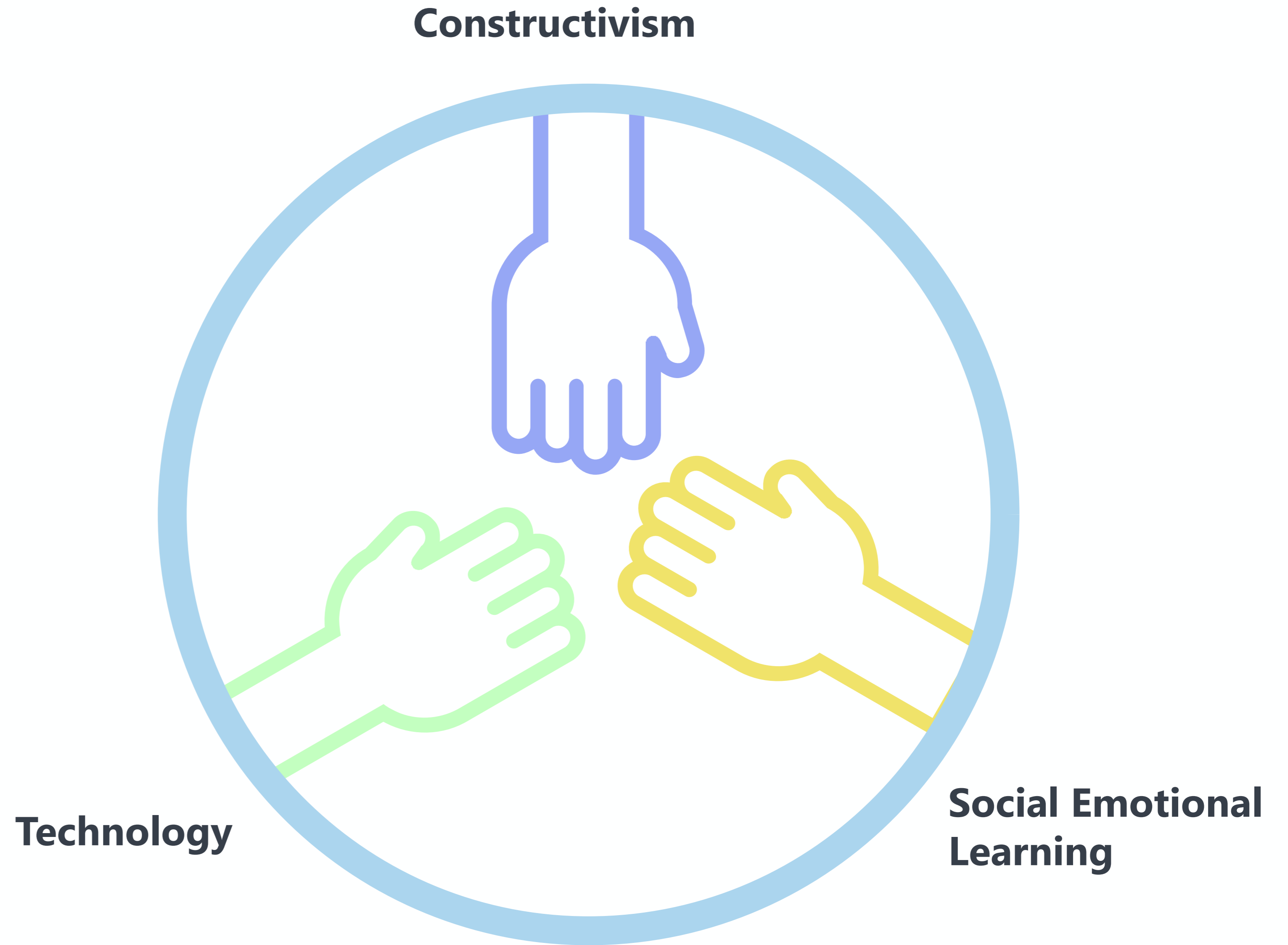


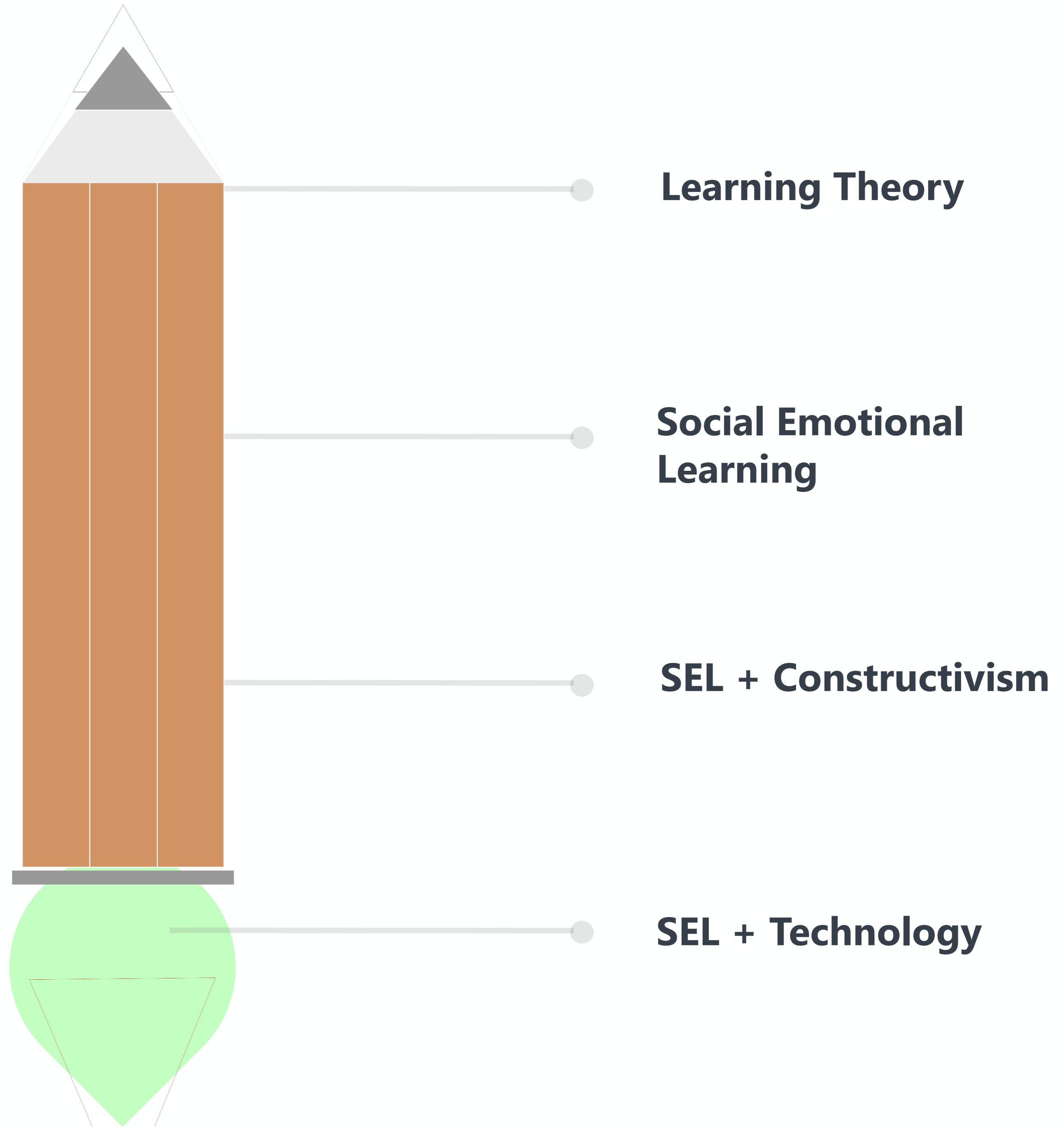
A Constructivist's Approach to Social Emotional Learning Technology

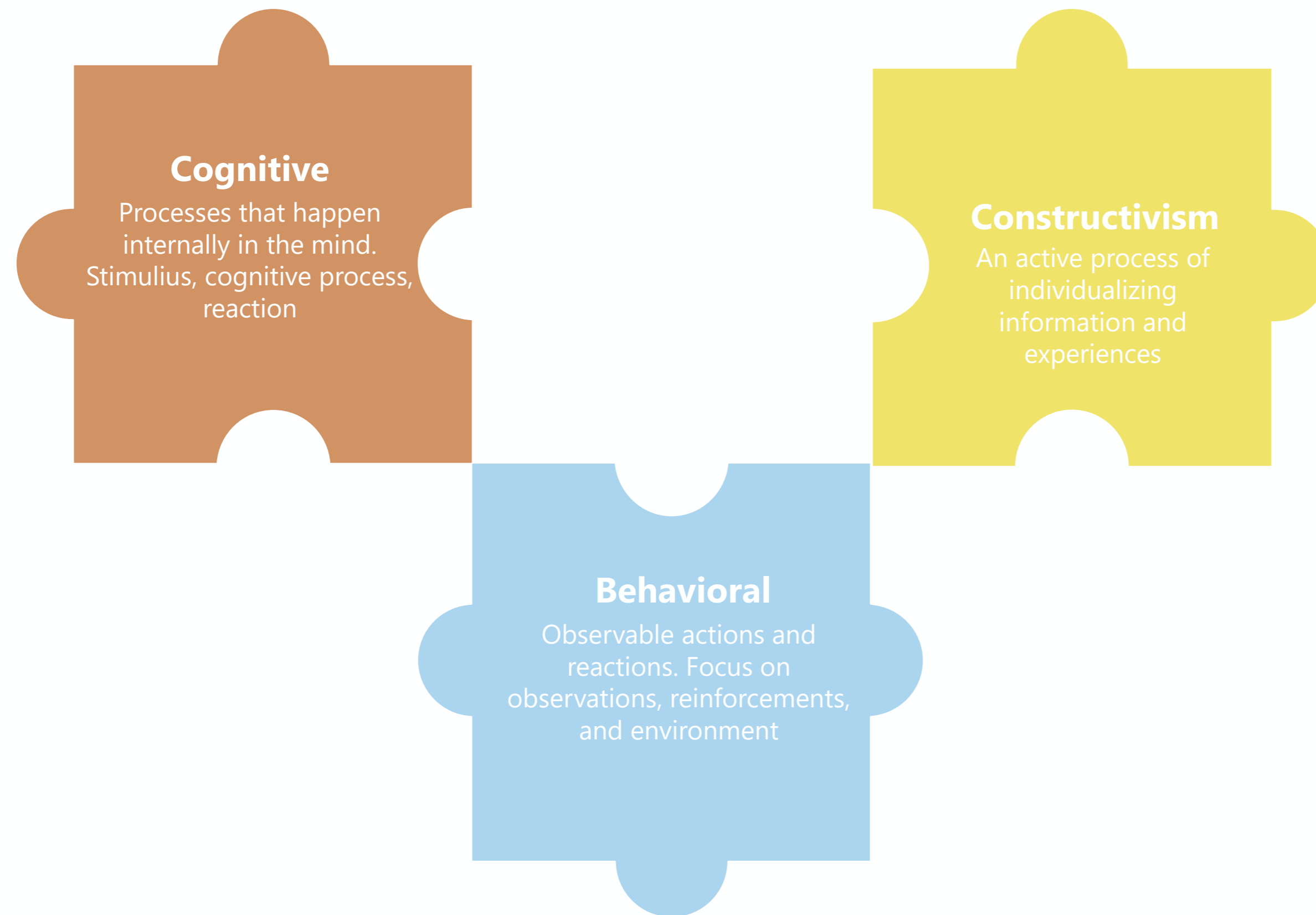
The Chicago School of Professional Psychology
EPT746
Mitch Schneider



Education & Learning

A primary goal of education is to provide academic and non-academic skills towards the development of a lifelong learner. The incorporation of learning theories and technology





Learning Theories

Learning theories are academic and scientific models that describe how individuals learn. It focuses on acquisition, processing, and storing of information. The foundational learning theories include cognitive, behavioral, and constructivism.

Constructivism

Individuals seeks meaning from the information they receive and adapt it to their own construct

Theory

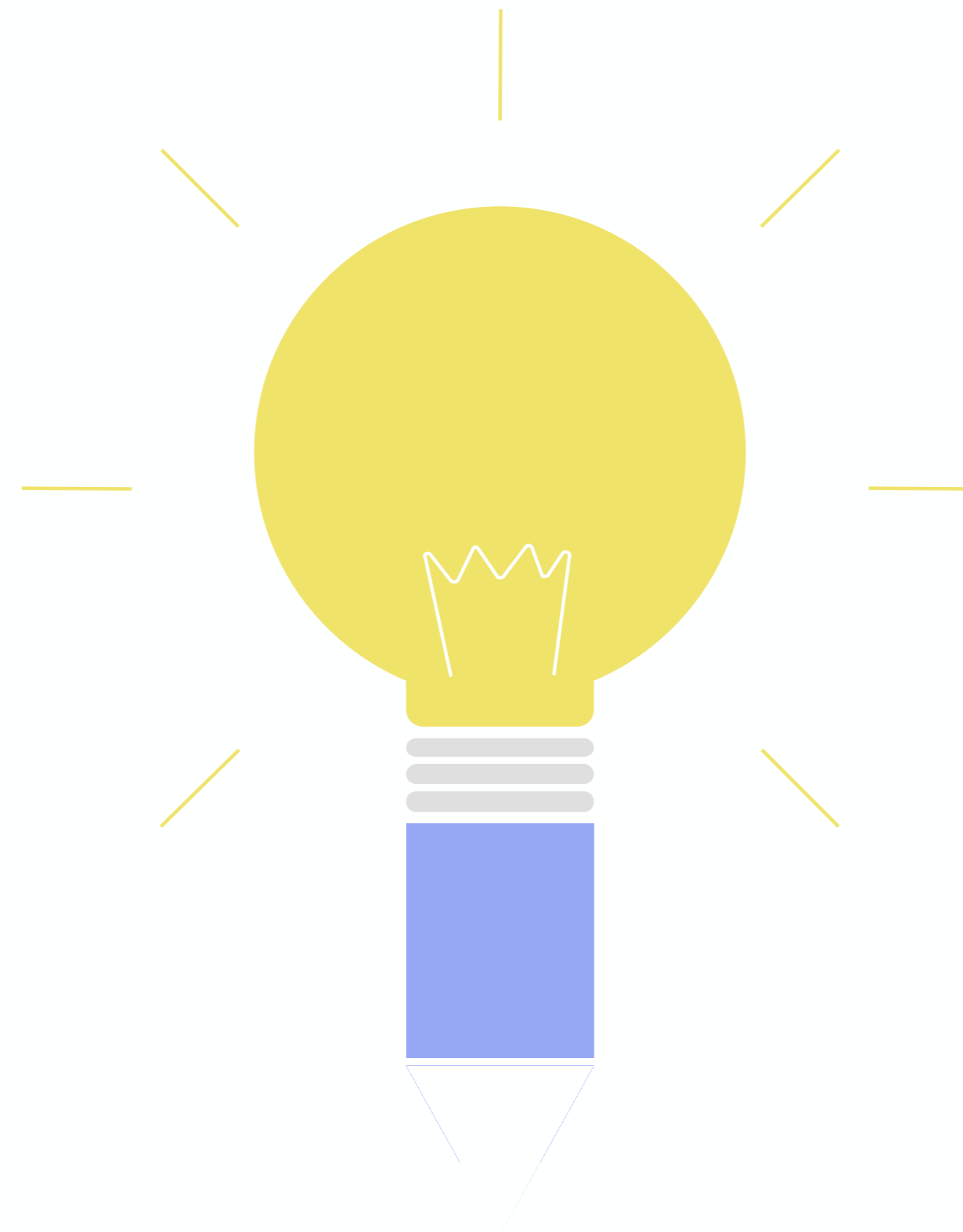
A key foundational learning theory

Focus

Focus is on the individual

Process

It is an active learning process by the learner



Memory

Building upon past knowledge

Stimuli

Social, environmental,...experience

Examples

Reviews, hands-on, internships, differentiation

Social Emotional Learning

SEL is the process of developing emotional intelligence. Non-academic skills are equally essential in developing lifelong learners and effective 21st century global citizens



Self Awareness



Self Management



Social Awareness



Relationships Development



Responsible Decision Making

Social Emotional Learning & Constructivism

Social emotional learning has limited theoretical foundation of its own, rather it adopted its foundation from the theory of emotional intelligence. Motivation, emotion, and social aspects fit well with the constructivist, especially social constructivist learning theory.



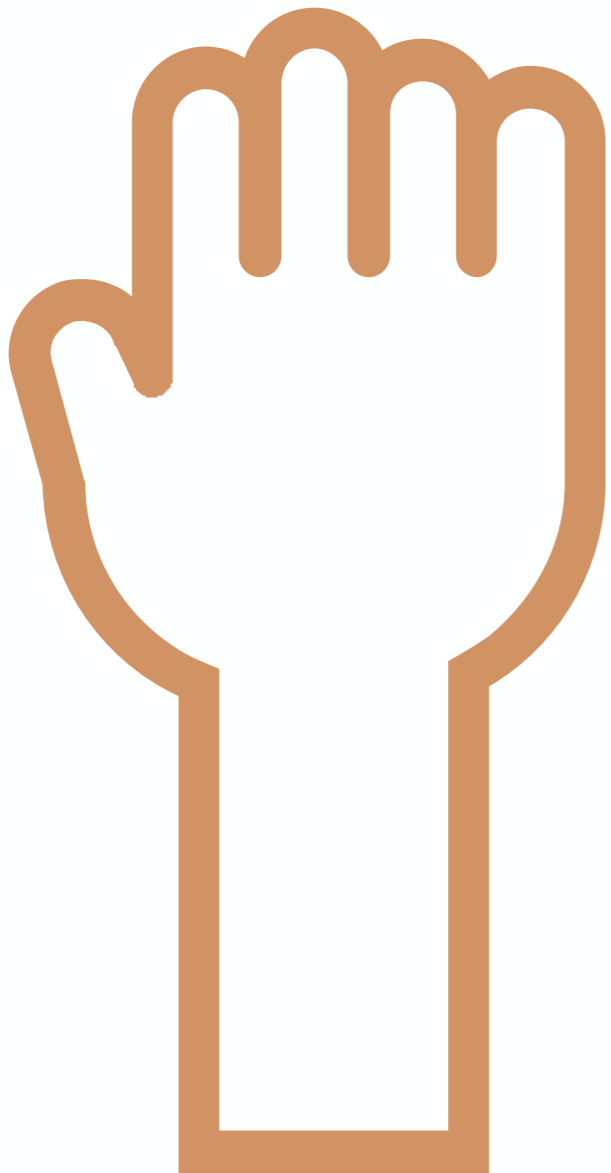
Social Emotional Learning Technology

The process of integrating technology within the process of acquiring emotional intelligence through social emotional learning curricula

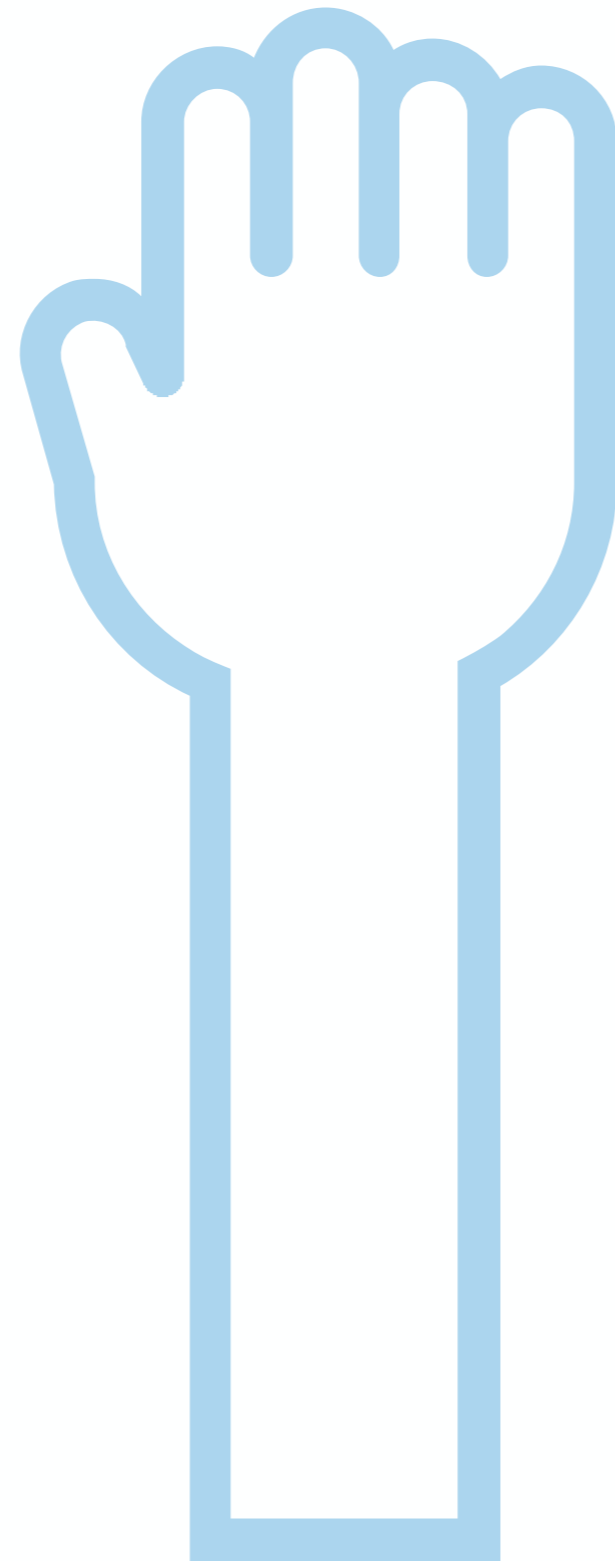


Ethics of Instruction

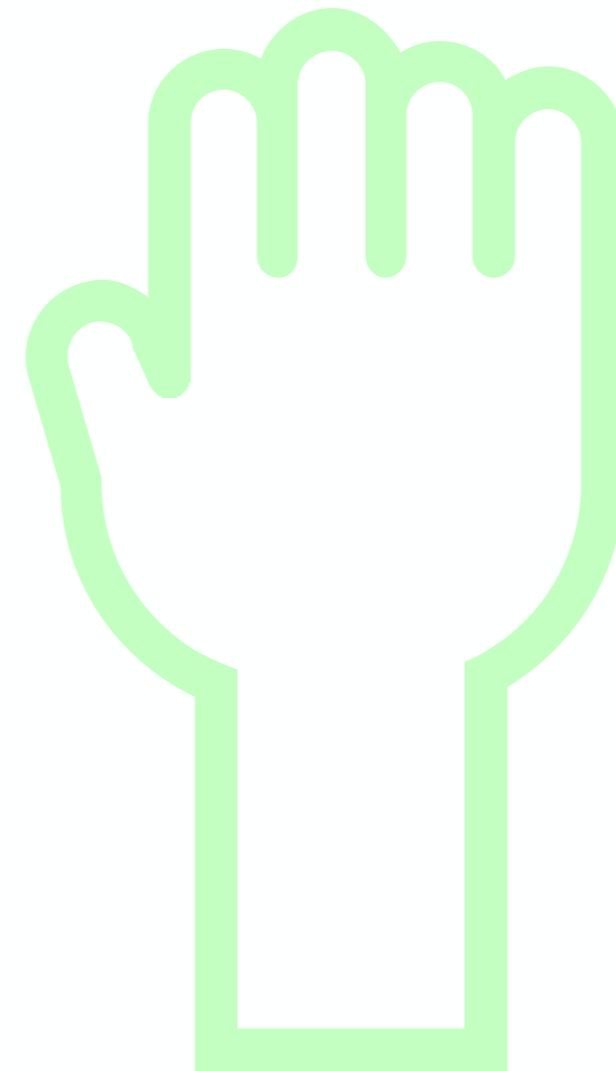
Iterative



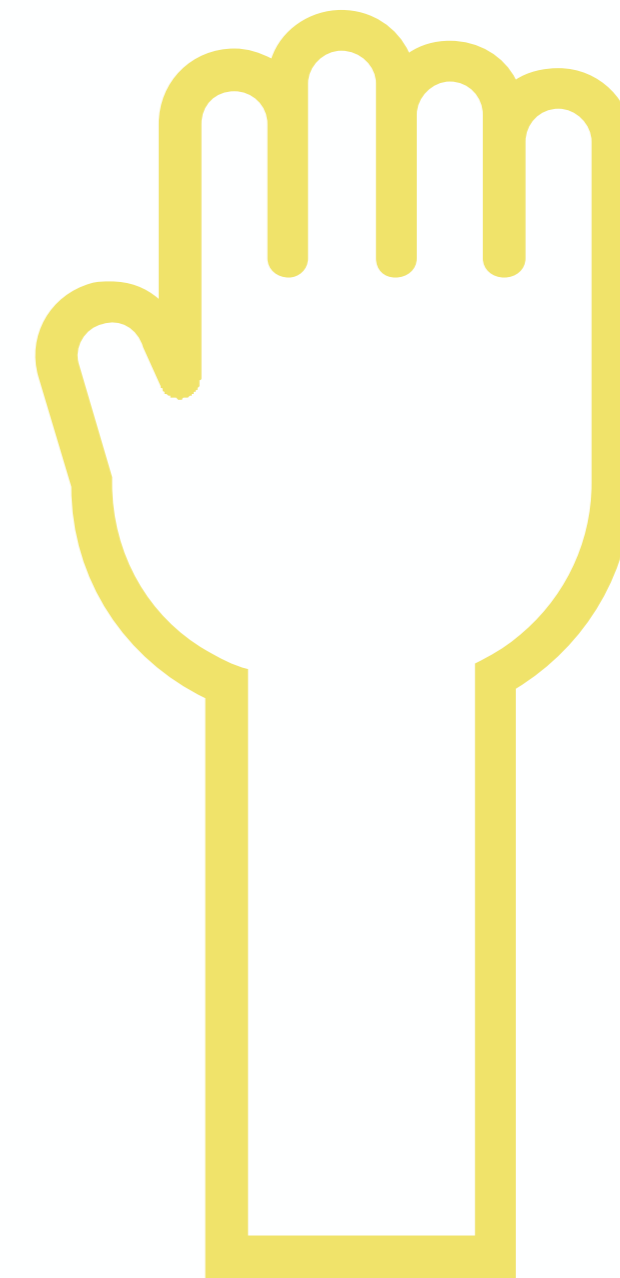
Access



Universal

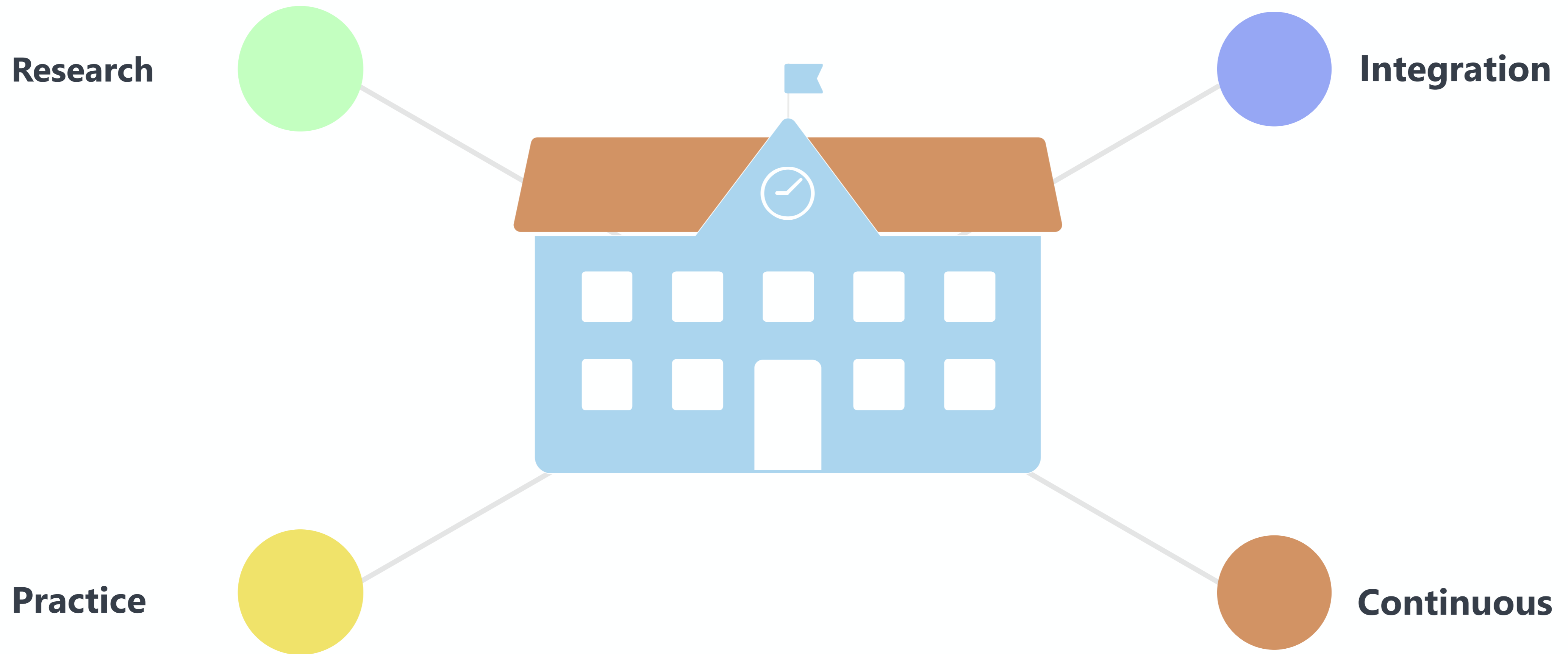


Justice



Conclusion

Learning requires integration of strategies, practices, and knowledge. Integration of learning theories, curricula, and technology will become commonplace for 21st century learning. Morality, ethics, and standards must also always be a part of learning, education, and society.



References

Marketing is the study and management of exchange relationships. Marketing is the business process of creating relationships with and satisfying customers.

Chen, C. (2009). Theoretical bases for using virtual reality in education. *Themes in Science and Technology Education*, 2(1-2), 71-90.

Collaborative for Academic, Social, and Emotional Learning (CASEL). (n.d.). *Overview of SEL*. Retrieved November 7, 2018, from <https://casel.org/overview-sel/>

Ertmer, P. & Newby, T. (1993). Behaviorism, cognitivism, constructivism: Comparing critical features from an instructional design perspective. *Performance Improvement Quarterly*, 6(4), 50-71.

Goleman, D. (1995). *Emotional intelligence*. New York City, NY: Bantam Books.

Harasim, L. (2017). *Learning theory and online technologies* (2nd ed.). New York, NY: Routledge.

Schunk, D. H. (2012). *Learning theories: An educational perspective* (6th ed.). Boston, MA: Pearson